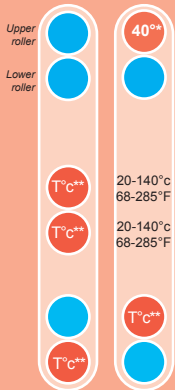


Atlantic's heating system electronically controlled by an infra red sensor facilitates different temperature settings for the top and bottom rollers in order to offer all finishing solutions up to 1.60 meter (63") width.

Temperature control



Pressure sensitive films:

- lamination, encapsulation, adhesive setting, mounting
- * 40°C 104°F recommended temperature for optimised results with these laminating films

Thermal films :

- Encapsulation with lamination films up to 250 microns thickness (10 mil)
 - Encapsulation with opaque backing substrates
 - Use of different film on top and bottom (thickness, texture)
 - Use of pressure sensitive and thermal film in one pass
- T°C** Separate control of the top and bottom heating rollers temperature

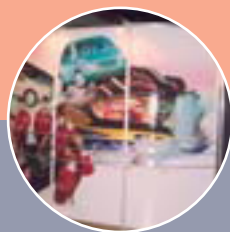
Pivoting feeding tray facilitates easy loading of film rolls. Connected to a safety device installed in the machine, it provides maximum security to user while loading.



Atlantic 1600 Laminating systems are ideal for professionals who aim to offer the broadest range of lamination services and to get maximum benefit out of their investment.



Optional electrical rewinding system for handling large jobs.



Creative applications with Atlantic 1600

ATLANTIC 1600

Technical Specifications

Max. working width	1600 mm (63")
Length of the roller	1674 mm (66")
Diameter of the heating rollers	106 mm (4 1/6")
Max. thickness of print + board	25 mm (1")
Max. thickness of the film	320 microns / side (13 mil)
Independent adjustment and display of the roller temperature	yes, from 20 to 140°C 68°F to 285°F
Digital display of the roller pressure	yes
Upper & lower winding and unwinding spindles	yes
Number of spindles delivered with the machine	4
Maximum speed meters/min (ft/min)	3 - (10)
Reverse operation	yes
Motor control pedal	yes
Emergency stop button	2
Stand mounted on self-locking castors	yes
Electrical print rewinding system	optional
Power of the motor (W)	100
Heating power (W)	3400
Voltage	230V/50Hz-60 Hz single phase
Amperes	16 amps
Size of the machine on stand	L194 x D76 x H137 cm - (77"x30"x54")
Weight of the machine kg (Lbs)	324 - (713)
Size of the shipping crate	L225 x D105 x H100 cm - (89"x42"x40")
Shipping weight kg (Lbs)	372 - (819)
Made in France	
EC Certification	



1, RUE DE LA HAYE - LE DÔME 1 - ROISSY-PÔLE - 93290 TREMBLAY EN FRANCE
TÉL. 01 78 78 72 50 - FAX 01 78 78 72 51
 GREEN TECH BÂT. 1 - 549, BD PIERRE SALUVAIGO - 06480 LA COLLE-SUR-LOUP
TÉL. 04 97 02 25 25 - FAX 04 97 02 25 20
 contact@s2idigital.com www.s2idigital.com www.s2istore.com